



AGENDA
Meeting
of the
BOARD OF DIRECTORS
of the
SANTA BARBARA METROPOLITAN TRANSIT DISTRICT
A Public Agency
November 2, 2010
8:30 a.m.
Santa Barbara MTD Auditorium
550 Olive Street, Santa Barbara, CA 93101

1. CALL TO ORDER

2. ROLL CALL OF THE BOARD OF DIRECTORS

Dave Davis, Chair; Roger Aceves, Vice Chair; Chuck McQuary, Secretary; Dick Weinberg, Director; Brian Fahnestock, Director; John Britton, Director; Olivia Rodriguez, Director

3. REPORT REGARDING POSTING OF AGENDA

CONSENT CALENDAR

4. APPROVAL OF PRIOR MINUTES (ATTACHMENT- ACTION MAY BE TAKEN)

The Board will be asked to waive the reading of and approve the draft minutes for the meeting of October 19, 2010.

5. CASH REPORT- (ATTACHMENTS- ACTION MAY BE TAKEN)

The Board will be asked to review the cash report of October 12, 2010 through October 25, 2010.

THIS CONCLUDES THE CONSENT CALENDAR

6. PUBLIC COMMENT

Members of the public may address the Board on items within the jurisdiction of the Board that are not scheduled for public hearing. The time allotted per speaker will be at the discretion of the Board Chair. If you wish to address the Board under this item number, please complete and deliver to the MTD Board Clerk before the meeting is convened, a "Request to Speak" form including a description of the subject you wish to address. Additional public comment will be allowed during each agenda item, including closed session items. Please fill out the Request to Speak form and indicate the agenda item # that you wish to comment on.

7. QUARTERLY STAFF REPORTS (ATTACHMENT- ACTION MAY BE TAKEN)

The Board will review quarterly staff reports for the period of July 1, 2010 to September 30, 2010.

8. 2010 DECENNIAL CENSUS UPDATE (ACTION MAY BE TAKEN)

Staff will update the Board on the 2010 Decennial Census.

9. PROPOSITION 1B – TRANSIT SECURITY GRANT FOR FISCAL YEAR 09-10

The Board will be asked to authorize the submittal of documents for the application of the FY 09-10 Proposition 1B – Transit Security funds and approve the proposed Resolution provided by the State for Proposition 1B – Transit Security funds.

10. GENERAL MANAGER’S REPORT- (ACTION MAY BE TAKEN)

- a) Post Halloween Update
- b) Veterans Day
- c) Calle Real
- d) Brown Act Seminar
- e) Valley Express
- f) EV 18
- g) TTAC
- h) Anapamu Street
- i) Other

11. OTHER BUSINESS AND COMMITTEE REPORTS- (ACTION MAY BE TAKEN)

The External Affairs/ Legislative Committee will report on their meeting of October 25, 2010.

PUBLIC COMMENT WILL BE ALLOWED RELATED TO THE CLOSED SESSION ITEM(S) BEFORE THE RECESS.

12. RECESS TO CLOSED SESSION– UNION NEGOTIATIONS– (ACTION MAY BE TAKEN)

The Board will meet in closed session pursuant to Government Code §54957.6 to discuss labor negotiations with labor negotiators Sherrie Fisher, General Manager and Jerry Estrada, Assistant General Manager.

Employee Organization: International Brotherhood of Teamsters Union Local 186.

13. ADJOURNMENT

AMERICANS WITH DISABILITIES ACT: If you need special assistance to participate in this meeting, please contact the MTD Administrative Office at 963-3364 at least **48 hours in advance** of the meeting to allow time for MTD to attempt a reasonable accommodation.



DRAFT MINUTES
Meeting
of the
BOARD OF DIRECTORS
of the
SANTA BARBARA METROPOLITAN TRANSIT DISTRICT
A Public Agency
October 19, 2010
8:30 a.m.
Santa Barbara MTD Auditorium
550 Olive Street, Santa Barbara, CA 93101

1. CALL TO ORDER

Chair Davis called the meeting to order at 8:30 a.m.

2. ROLL CALL OF THE BOARD OF DIRECTORS

Chair Davis reported that all members were present except for Director Fahnestock.

3. REPORT REGARDING POSTING OF AGENDA

Imelda Martin, Executive Assistant to the General Manager and Board of Directors reported that the agenda was posted on Friday, October 15, 2010 at MTD's administrative offices, emailed and mailed to those on the agenda list, and posted on MTD's website.

CONSENT CALENDAR

4. & 5. APPROVAL OF PRIOR MINUTES (ATTACHMENT- ACTION MAY BE TAKEN) CASH REPORT- (ATTACHMENTS- ACTION MAY BE TAKEN)

Director Britton moved to approve the draft minutes for the meeting of September 21, 2010 and approve the cash reports of September 14, 2010 through September 27, 2010 and September 28, 2010 through October 11, 2010. Director Rodriguez seconded the motion. Director McQuary suggested two amendments to the prior minutes. The motion passed unanimously with Director McQuary's amendments.

THIS CONCLUDES THE CONSENT CALENDAR

6. PUBLIC COMMENT

There was no public comment.

7. HALLOWEEN SERVICE- (ACTION MAY BE TAKEN)

Bill Morris, Manager of Operations discussed the recommended additional booster service, supervisors, and the "rental" of two Santa Barbara Police Department officers for Halloween weekend. Following a discussion, Director Britton moved to authorize staff to move forward with the recommendations. Director McQuary seconded the motion. Director Aceves asked staff to return to the full Board with a post Halloween Report. The motion passed unanimously.

8. TRANSPORTATION DEVELOPMENT ACT (TDA) AUDIT FINAL DRAFT (ATTACHMENT- ACTION MAY BE TAKEN)

General Manager Fisher reported that as indicated in the Final Draft of the Transportation Development Act (TDA) Audit, the District passed with no negative findings and a few recommendations. Assistant General Manager/ Controller, Jerry Estrada reported that every requirement was met and the District is fully in compliance with the TDA. Mr. Estrada reviewed the auditor's recommendations. Mr. Estrada stated that there would not be a problem in complying with the recommendations. The Board complimented staff on their hard work. Director McQuary stated that this satisfactory audit is not only a reflection on the District, it is also a reflection of the Board.

9. OVERPASS ROAD HYDRAULIC LIFT REMOVAL- (ACTION MAY BE TAKEN)

Assistant General Manager/ Controller, Jerry Estrada reviewed a deed notification request received from the Santa Barbara County Fire Department with regard to the Overpass Road Hydraulic Lift Removal. Following a discussion, the Board asked staff to return with a recommendation from MTD's environmental consultant, Dave Johannes with Certified Environmental Consultants. Director Rodriguez requested that staff also consult legal counsel on this matter.

10. DEPARTMENT OF COMMERCE COMMENTS - (ACTION MAY BE TAKEN)

Assistant General Manager/ Controller, Jerry Estrada reported that this is a very complex and serious matter. Mr. Estrada reported that the 2010 US Department of Commerce presents a number of potential issues for MTD. One issue is the proposed criteria of delineation for the Santa Barbara Urbanized Area (SB UZA). The criteria may result in the potential merger of the SB UZA into an agglomeration of UZA's extending to Los Angeles. Secondly, it is probable that the SB UZA will exceed 200,000 in population, resulting in possible changes to MTD's Section 5207 funding apportionment and the rules that apply to these funds. Following a detailed discussion, the Board referred this item to the External Affairs/ Legislative Committee.

11. GENERAL MANAGER'S REPORT- (ACTION MAY BE TAKEN)

General Manager Fisher reported that she spoke under public comment to the City Councils of Buellton and Solvang regarding the Valley Express. The councils and the Santa Barbara County Association of Governments South Coast Subregional Planning Committee concurred in supporting the Reintegration Plan of the Valley Express. General Manager Fisher also stated that there are conversations underway with Ventura County Transportation Commission regarding the use of the 5 buses for service to the south.

General Manager Fisher reported that there was a temporary issue at the County Health bus stop on Camino del Remedio. Clean Air Express buses were parking on the street near an MTD bus stop, which limited the space available for our buses to travel up to County Health. In working with Clean Air Express staff, the problem has been remedied.

Steve Maas updated the Board on the next steps in "Plan SB," the City's general plan update process.

12. OTHER BUSINESS AND COMMITTEE REPORTS- (ACTION MAY BE TAKEN)

No reports were made.

PUBLIC COMMENT WILL BE ALLOWED RELATED TO THE CLOSED SESSION ITEM(S) BEFORE THE RECESS.

13. RECESS TO CLOSED SESSION- CONFERENCE WITH LEGAL COUNSEL- ANTICIPATED LITIGATION (Section 54956.9 (b)) (ACTION MAY BE TAKEN)

The Board met in closed session pursuant to Government Code § Section 54956.9 (b).
One case: Jamie Eschette vs. MTD

Upon returning from closed session, Chair Davis reported that the Board authorized the settlement of up to \$6,500.00

14. RECESS TO CLOSED SESSION- CONFERENCE WITH LEGAL COUNSEL- PENDING LITIGATION (Section 54956.9 (a)) (ACTION MAY BE TAKEN)

The Board met in closed session pursuant to Government Code § Section 54956.9 (a). One case: Lease Anderson vs. MTD, et.al.

Upon returning from closed session, Chair Davis reported that no action was taken.

15. RECESS TO CLOSED SESSION– UNION NEGOTIATIONS– (ACTION MAY BE TAKEN)

The Board met in closed session pursuant to Government Code §54957.6 to discuss labor negotiations with labor negotiators Sherrie Fisher, General Manager and Jerry Estrada, Assistant General Manager.

Employee Organization: International Brotherhood of Teamsters Union Local 186.

15. ADJOURNMENT

Director Aceves moved to adjourn the meeting. Director Rodriguez seconded the motion. The motion passed unanimously. The meeting was adjourned at 10:44 a.m.

AMERICANS WITH DISABILITIES ACT: If you need special assistance to participate in this meeting, please contact the MTD Administrative Office at 963-3364 at least **48 hours in advance** of the meeting to allow time for MTD to attempt a reasonable accommodation.

Santa Barbara Metropolitan Transit District
Cash Report
Board Meeting of November 2, 2010
For the Period October 12, 2010 through October 25, 2010

MONEY MARKET

Beginning Balance October 12, 2010 **\$4,806,853.76**

SB-325 (LTF)	390,803.33
Accounts Receivable	380,801.22
Passenger Fares	159,668.54
Measure "A"	104,422.69
Miscellaneous/Asset Sales	4,053.38
Interest Income - Sept. 10	3,416.79
Advertising/Prepaid Deposits	<u>2,416.00</u>
Total Deposits	1,045,581.95

ACH Garnishment Trf	(1,370.03)
ACH Pensions Transfer	(33,193.75)
WC Transfer - Sept. 10	(71,428.66)
ACH Tax Deposit	(129,824.91)
Payroll Transfer	(299,321.60)
Operations Transfer	<u>(367,747.74)</u>
Total Disbursements	(902,886.69)

Ending Balance **\$4,949,549.02**

CASH INVESTMENTS

LAIF Account	\$3,284,886.83
Money Market Account	<u>4,949,549.02</u>

Total Cash Balance **\$8,234,435.85**

SELF INSURED LIABILITY ACCOUNTS

WC / Liability Reserves	(\$1,225,680.13)
-------------------------	------------------

Working Capital **\$7,008,755.72**

**Santa Barbara Metropolitan Transit District
Accounts Payable**

Check #	Date	Company	Description	Amount	Voids
96728	10/15/2010	APPLIED INDUSTRIAL TECHNOLOGI	BUS & FAIRBOX PARTS	134.53	
96729	10/15/2010	AMERICAN NAMEPLATE COMPANY	ENGRAVING SERVICES	20.88	
96730	10/15/2010	ANDREWS, HENRY	REIMBURSEMENT	269.49	
96731	10/15/2010	BLOCK AND COMPANY, INC	MONEY HANDLING SUPPLIES	169.89	
96732	10/15/2010	BNS ELECTRONICS, INC.	GIB. SITE RENTAL	230.56	
96733	10/15/2010	BOMAR SECURITY & INVESTIGATI	SECURITY SERVICES	408.32	
96734	10/15/2010	BUENA TOOL, INC.	SHOP/B&G SUPPLIES	6.80	
96735	10/15/2010	CARQUEST AUTO PARTS	BUS PARTS & SUPPLIES	241.75	
96736	10/15/2010	CENTRAL CITY ABS, INC.	BUS SUPPLIES	111.45	
96737	10/15/2010	COMMUNITY RADIO, INC.	GIB. SITE RENTAL	225.35	
96738	10/15/2010	CINTAS FIRST AID & SAFETY LOC #	FIRST AID SUPPLIES	212.58	
96739	10/15/2010	COAST TRUCK PARTS	BUS PARTS	229.87	
96740	10/15/2010	COX COMMUNICATIONS	INTERNET & CABLE TV	212.96	
96741	10/15/2010	CUMMINS CAL PACIFIC LLC	BUS PARTS	2,898.94	
96742	10/15/2010	CA STATE BOARD OF EQUALIZATIO	USER FUEL TAX	1,515.37	
96743	10/15/2010	CA. STATE BOARD OF EQUALIZATI	UNDERGROUND STORAGE TANK FEE	3,148.10	
96744	10/15/2010	DELTA DENTAL - CLIENT SERVICES	DENTAL INSURANCE	727.20	
96745	10/15/2010	DELTACARE USA #06485-0001	DENTAL INSURANCE	130.92	
96746	10/15/2010	DOCUPRODUCTS CORPORATION	COPIER COPIES & SUPPLIES	166.51	
96747	10/15/2010	DONS INDUSTRIAL, INC.	BUS PARTS/SHOP SUPPLIES	200.75	
96748	10/15/2010	DOWNTOWN ORGANIZATION, INC.	TC MAINTENANCE	450.00	
96749	10/15/2010	EASY LIFT TRANSPORTATION, INC.	ADA SUBSIDY	47,867.00	
96750	10/15/2010	FEDEX OFFICE	PRINTING SERVICES	325.23	
96751	10/15/2010	GFI GENFARE, INC.	FAREBOX REPAIRS & PARTS	655.64	
96752	10/15/2010	GIBBS INTERNATIONAL INC	BUS PARTS/SUPPLIES	2,006.52	
96753	10/15/2010	GILLIG LLC DBA	BUS PARTS	1,560.36	
96754	10/15/2010	H.G. MAKELIM CO.	BUS PARTS	468.73	
96755	10/15/2010	H. G. PETERSEN FAMILY PROPERTI	PARKING FOR VALLEY BUSES	100.00	
96756	10/15/2010	HOPPECKE BATTERIES, INC.	BATTERY SETS	2,488.50	
96757	10/15/2010	INTERCON TECHNOLOGIES DBA	EV/CHARGER REPAIRS	6,952.32	
96758	10/15/2010	INDOFF, INC.	OFFICE SUPPLIES	1,061.76	
96759	10/15/2010	IPC (USA), INC.	BUS FUEL	21,913.29	
96760	10/15/2010	KIMBALL MIDWEST	SHOP SUPPLIES	104.14	
96761	10/15/2010	LENZ PEST CONTROL DBA	FUMIGATION SERVICES	245.00	
96762	10/15/2010	MC CORMIX CORP. (GAS)	FUEL-SERVICE VEHICLES	1,800.21	
96763	10/15/2010	MCMASTER-CARR SUPPLY CO.	SHOP/B&G SUPPLIES	12.01	
96764	10/15/2010	MIKE CUEVAS GARDENING SERVIC	LANDSCAPE MAINTENANCE SERVICE	632.00	

Check #	Date	Company	Description	Amount	Voids
96765	10/15/2010	MOHAWK MFG. AND SUPPLY CO.	BUS PARTS	483.40	
96766	10/15/2010	MUZICRAFT, INC	TC CONTRACT MAINTENANCE	38.00	
96767	10/15/2010	NATIONAL INTERSTATE INS INC.	ESCROW/LIABILITY INSURANCE	21,105.92	
96768	10/15/2010	NEWEGG, INC	COMPUTER SUPPLIES & REPAIRS	1,558.46	
96769	10/15/2010	NU-COOL REDI GREEN	COOLANTS & SHOP SUPPLIES	533.15	
96770	10/15/2010	NU IMAGE AD GROUP DBA	PROFESSIONAL SERVICES	324.73	
96771	10/15/2010	PREVOST CAR INC.- CREDIT DEPT.	BUS PARTS	1,127.43	
96772	10/15/2010	O'REILLY, RICHARD	DMV REIMB.	39.00	
96773	10/15/2010	PACE PUBLICATIONS	MEDIA ADVERTISING	380.00	
96774	10/15/2010	PETTY CASH - MARTIN, IMELDA	MISC. PURCHASES	299.02	
96775	10/15/2010	PITNEY BOWES INC	POSTAGE METER QTRLY CHARGES	146.82	
96776	10/15/2010	QUALITY WINDOWS	B & G REPAIRS	1,032.21	
96777	10/15/2010	REPUBLIC ELEVATOR, INC	ELEVATOR MAINTENANCE	132.07	
96778	10/15/2010	SB LOCKSMITHS, INC.	B&G REPAIR & SUPPLIES	28.78	
96779	10/15/2010	SC VALLEY TRANSPORTATION AUT	BUS PARTS	140.29	
96780	10/15/2010	SEELEY, KAREN	PAYROLL RELATED	75.69	
96781	10/15/2010	SERVICE MASTER OF SANTA BARB	JANITORIAL SERV./SUPPLIES	4,952.00	
96782	10/15/2010	SM TIRE, CORP.	BUS TIRE MOUNTING	357.00	
96783	10/15/2010	SMART & FINAL	OFFICE/MEETING SUPPLIES	421.26	
96784	10/15/2010	SO. CAL. EDISON CO.	UTILITIES	3,166.13	
96785	10/15/2010	SPECIALTY TOOL & BOLT	SHOP SUPPLIES	11.94	
96786	10/15/2010	TELCOM, INC.	RADIO INSTALLATION & SERVS.	657.94	
96787	10/15/2010	THE LIGHTHOUSE	SHOP SUPPLIES	88.16	
96788	10/15/2010	TANK TEAM INC.	TANK TESTS	103.00	
96789	10/15/2010	TEAMSTERS MISC FUND	UNION MEDICAL/DENTAL	127,474.03	
96790	10/15/2010	UNITED PARCEL SERVICE, INC.	FREIGHT CHARGES	226.38	
96791	10/15/2010	WAXIE SANITARY SUPPLY DBA	JANITORIAL SUPPLIES	1,027.71	
96792	10/15/2010	WURTH USA WEST INC.	SHOP SUPPLIES	338.85	
96793	10/25/2010	BIG BRAND TIRES	SERVICE & TIRES SERVICE VEHICLE	431.93	
96794	10/25/2010	BOMAR SECURITY & INVESTIGATI	SECURITY SERVICES	204.16	
96795	10/25/2010	CARQUEST AUTO PARTS	BUS PARTS & SUPPLIES	215.77	
96796	10/25/2010	CENTRAL CITY ABS, INC.	BUS SUPPLIES	36.29	
96797	10/25/2010	CHILD SUPPORT ENFORCEMENT AG	PAYROLL RELATED	147.69	
96798	10/25/2010	COAST TRUCK PARTS	BUS PARTS	273.98	
96799	10/25/2010	CUMMINS CAL PACIFIC LLC	BUS PARTS	3,912.07	
96800	10/25/2010	DEAILE, MARY	PAYROLL RELATED	106.15	
96801	10/25/2010	FEDERAL EXPRESS CORP.	FREIGHT CHARGES	102.49	
96802	10/25/2010	FEDEX OFFICE	PRINTING SERVICES	10.14	
96803	10/25/2010	STATE OF CALIFORNIA	PAYROLL RELATED	175.00	
96804	10/25/2010	GIBBS INTERNATIONAL INC	BUS PARTS/SUPPLIES	2,114.42	

Check #	Date	Company	Description	Amount	Voids
96805	10/25/2010	GILLIG LLC DBA	BUS PARTS	1,916.58	
96806	10/25/2010	GONZALEZ, WENDY	PAYROLL RELATED	584.79	
96807	10/25/2010	GOODYEAR TIRE & RUBBER CO	LEASED TIRES	10,168.51	
96808	10/25/2010	H.G. MAKELIM CO.	BUS PARTS	1,879.32	
96809	10/25/2010	HILLYARD/LOS ANGELES	BUS / SHOP SUPPLIES	592.36	
96810	10/25/2010	HOME IMPROVEMENT CTR.	SHOP/B&G SUPPLIES	42.92	
96811	10/25/2010	INDOFF, INC.	OFFICE SUPPLIES	333.93	
96812	10/25/2010	UNITED STATES TREASURY - IRS	PAYROLL RELATED	500.00	
96813	10/25/2010	IPC (USA), INC.	BUS FUEL	43,921.08	
96814	10/25/2010	SHERIFF CIVIL BUREAU	PAYROLL RELATED	1,121.87	
96815	10/25/2010	KIMBALL MIDWEST	SHOP SUPPLIES	329.76	
96816	10/25/2010	LARA'S AUTO REPAIR DBA	BUS REPAIRS	45.00	
96817	10/25/2010	HOGAN MFG., INC. LIFT-U DIV.	BUS PARTS	447.77	
96818	10/25/2010	LUBRICATION ENGINEERS, INC.	LUBRICANTS	164.54	
96819	10/25/2010	MAR-CO INDUSTRIES INC	BUS PARTS	1,621.43	
96820	10/25/2010	MGB INDUSTRIAL SUPPLY	BUS & SHOP SUPPLIES	41.10	
96821	10/25/2010	NU-COOL REDI GREEN	COOLANTS & SHOP SUPPLIES	268.70	
96822	10/25/2010	OTTIERI, ANN BRADY	PR RELATED	277.00	
96823	10/25/2010	PHILLIPS 66-CONOCO-76	SERVICE VEHICLE FUEL	142.25	
96824	10/25/2010	PRIAC (plan #767055)	PENSION ADMIN QTRLY FEE	1,415.00	
96825	10/25/2010	ROGERS, SHEFFIELD & CAMPBELL,	LEGAL COUNSEL	12,717.25	
96826	10/25/2010	RON WILLIAMS MACHINE SHOP	BUS REPAIRS	804.00	
96827	10/25/2010	SB COUNTY FEDERAL CREDIT UNIO	PAYROLL DEDUCTION	1,348.00	
96828	10/25/2010	SEELEY, KAREN	PAYROLL RELATED	75.69	
96829	10/25/2010	SERVICE MASTER OF SANTA BARB	JANITORIAL SERV./SUPPLIES	708.93	
96830	10/25/2010	SM TIRE, CORP.	BUS TIRE MOUNTING	1,132.47	
96831	10/25/2010	SO. CAL. EDISON CO.	UTILITIES	6,449.97	
96832	10/25/2010	SOUTHERN CALIFORNIA GAS COMP	UTILITIES	118.97	
96833	10/25/2010	SPECIALTY TOOL & BOLT	SHOP SUPPLIES	38.42	
96834	10/25/2010	STEWART'S DE-ROOTING & PLUMBI	PLUMBING REPAIRS	80.00	
96835	10/25/2010	TEAMSTERS UNION LOCAL NO. 186	UNION DUES	312.35	
96836	10/25/2010	TRI-COUNTY AUTO GLASS INC	REPLACE BUS WINDOWS	220.00	
96837	10/25/2010	UPS FREIGHT	FREIGHT SHIPPING	138.58	
96838	10/25/2010	UNITED WAY OF SB	PAYROLL DEDUCTION	44.00	
96839	10/25/2010	VALLEY POWER SYSTEMS, INC.	BUS PARTS	770.00	
96840	10/25/2010	VERIZON CALIFORNIA	TELEPHONES	2,893.62	
96841	10/25/2010	WAXIE SANITARY SUPPLY DBA	JANITORIAL SUPPLIES	155.19	
96842	10/25/2010	YACO SCHOLARSHIP FUND	PAYROLL DEDUCTION	22.00	

Check #	Date	Company	Description	Amount	Voids
---------	------	---------	-------------	--------	-------

367,747.74

Current Cash Report Voided Checks: 0.00

Prior Cash Report Voided Checks: 0.00

Grand Total: \$367,747.74

**Santa Barbara Metropolitan Transit District
Cash Receipts of Accounts Receivable**

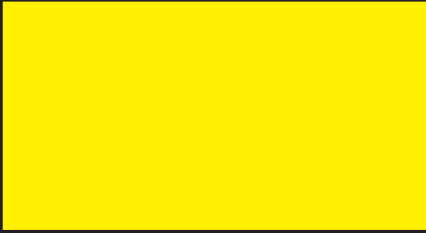
Date	Company	Description	Amount
10/7/2010	County of Santa Barbara	Passes/Token Sales	4,551.50
10/13/2010	Godzilla Graphics	Advertising on Buses	6,222.00
10/13/2010	Godzilla Graphics	Advertising on Buses	4,834.00
10/14/2010	Santa Barbara Axxess	Advertising on Buses	3,460.00
10/15/2010	City of SB Creeks Division	Advertising on Buses	483.00
10/18/2010	American Riviera Bank	Advertising on Buses	600.00
10/18/2010	SB School District	Passes/Token Sales	41,250.00
10/19/2010	Standard Out-Of-Home Media Networ	Advertising on Buses	3,381.00
10/20/2010	City of SB - Public Works	Advertising on Buses	800.00
10/21/2010	Cottage Hospital	Passes/Token Sales	5,200.00
10/21/2010	Cottage Hospital	Passes/Token Sales	4,600.00
10/21/2010	State Transit Assistance	STA - Capital June 2010	300.00
10/21/2010	State Transit Assistance	STA - Capital June 2010	305,119.72
Total Accounts Receivable Paid During Period			\$380,801.22

MTD QUARTERLY REPORT

Fiscal Year 2011

1st Quarter

Period Ending
September 30, 2010



Introducing new tools to make your commute easier.

Table of Contents

Planning & Marketing

Ridership and Overloads.....	3-9
Ad Space Revenue.....	10

Transit Operations

Operations.....	11-12
Fleet Maintenance.....	13-21

Management & Administration

Human Resources.....	22
Risk.....	23
Compliance.....	24
Organization Chart.....	25

Planning and Marketing

Ridership by Fare Category (July - September 2010)

Fare Categories	Quarter			YTD		
	Jul 10 - Sep 10	Jul 09 - Sep 09	% Change	FY 2011	FY 2010	% Change
General Fare	351,440	379,955	-7.5%	351,440	379,955	-7.5%
Transfers	215,163	218,330	-1.5%	215,163	218,330	-1.5%
Full Fare Prepaid (1)	369,977	483,954	-23.6%	369,977	483,954	-23.6%
Santa Barbara City College	223,769	229,992	-2.7%	223,769	229,992	-2.7%
Senior & Disabled Prepaid (2)	168,721	162,759	3.7%	168,721	162,759	3.7%
Shuttle (DWE, Commuter & Seaside)	175,016	192,493	-9.1%	175,016	192,493	-9.1%
UC Santa Barbara	101,231	86,407	17.2%	101,231	86,407	17.2%
Student Prepaid (3)	115,395	102,643	12.4%	115,395	102,643	12.4%
Free	86,335	89,546	-3.6%	86,335	89,546	-3.6%
My Ride	34,253	28,868	18.7%	34,253	28,868	18.7%
Senior	27,585	28,012	-1.5%	27,585	28,012	-1.5%
Persons with Disabilities	11,637	11,958	-2.7%	11,637	11,958	-2.7%
Tokens	7,179	7,838	-8.4%	7,179	7,838	-8.4%
Total	1,887,701	2,022,755	-6.7%	1,887,701	2,022,755	-6.7%

(1) Includes adult 10-ride and unlimited 30-day Passport use.

(2) Includes seniors' and persons with disabilities' 10-ride, and unlimited 30-day Passport use.

(3) Includes student 10-ride and unlimited 30-day Passport use.

Source: MTD Passdat Program, MTD Transit Development Department, Planning Section

Revenue Hours and Revenue Miles (July - September 2010)

Metrics	Quarter			YTD		
	Jul 10 - Sep 10	Jul 09 - Sep 09	%Change	FY 2011	FY 2010	% Change
Passengers	1,887,701	2,022,755	-6.7%	1,887,701	2,022,755	-6.7%
Revenue Hours	53,947	53,131	1.5%	53,947	53,131	1.5%
Passengers per Revenue Hour	34.99	38.07	-8.1%	34.99	38.07	-8.1%
Miles	663,161	662,683	0.1%	663,161	662,683	0.1%
Passengers per Mile	2.85	3.05	-6.7%	2.85	3.05	-6.7%

Source: MTD Passdat Program, MTD Transit Development Department, Planning Section

Planning and Marketing

MTD System Ridership (July - September 2010)

LINE	Quarter			YTD		
	Jul 10 - Sep 10	Jul 09 - Sep 09	% Change	FY 2011	FY 2010	% Change
1 West Santa Barbara	116,985	126,126	-7.2%	116,985	126,126	-7.2%
2 East Santa Barbara	170,486	186,095	-8.4%	170,486	186,095	-8.4%
3 Oak Park	79,682	88,200	-9.7%	79,682	88,200	-9.7%
4 Mesa / SBCC	39,782	39,290	1.3%	39,782	39,290	1.3%
5 Mesa / La Cumbre	53,310	53,755	-0.8%	53,310	53,755	-0.8%
6 Goleta	188,564	209,125	-9.8%	188,564	209,125	-9.8%
7 County Health / Fairview	36,829	13,906	164.8%	36,829	13,906	164.8%
8 County Health	33,814	59,324	-43.0%	33,814	59,324	-43.0%
9 Calle Real / Old Town Shuttle	17,610	26,126	-32.6%	17,610	26,126	-32.6%
10 Cathedral Oaks	8,458	13,715	-38.3%	8,458	13,715	-38.3%
11 UCSB	232,667	250,678	-7.2%	232,667	250,678	-7.2%
12x Goleta Express	74,163	80,129	-7.4%	74,163	80,129	-7.4%
14 Montecito	28,601	34,361	-16.8%	28,601	34,361	-16.8%
15x SBCC / UCSB Express	55,681	52,667	5.7%	55,681	52,667	5.7%
16 City College Shuttle	25,233	27,432	-8.0%	25,233	27,432	-8.0%
17 Lower West / SBCC	60,117	67,802	-11.3%	60,117	67,802	-11.3%
20 Carpinteria	92,502	103,060	-10.2%	92,502	103,060	-10.2%
21x Carpinteria Express	29,622	34,941	-15.2%	29,622	34,941	-15.2%
22 Old Mission	6,349	7,780	-18.4%	6,349	7,780	-18.4%
23 Winchester Canyon	40,855	48,984	-16.6%	40,855	48,984	-16.6%
24x UCSB Express	117,593	114,020	3.1%	117,593	114,020	3.1%
25 Ellwood	22,897	26,375	-13.2%	22,897	26,375	-13.2%
27 Isla Vista Shuttle	45,444	15,003	202.9%	45,444	15,003	202.9%
36 Seaside Shuttle	28,013	27,658	1.3%	28,013	27,658	1.3%
37 Crosstown Shuttle	38,551	43,079	-10.5%	38,551	43,079	-10.5%
Booster Services	38,446	59,058	-34.9%	38,446	59,058	-34.9%
System Subtotal	1,682,254	1,808,689	-7.0%	1,682,254	1,808,689	-7.0%
<i>Downtown Waterfront Shuttles</i>						
30 Downtown Shuttle	149,874	151,966	-1.4%	149,874	151,966	-1.4%
31 East Beach Waterfront Shuttle	31,349	32,766	-4.3%	31,349	32,766	-4.3%
32 West Beach Waterfront Shuttle	13,706	13,628	0.6%	13,706	13,628	0.6%
33 Wharf Woody/Special Service	-	-	0.0%	-	-	0.0%
<i>Commuter Lot Shuttle</i>						
50 Carillo Commuter Lot Shuttle	3,290	5,148	-36.1%	3,290	5,148	-36.1%
<i>Valley Express</i>						
82 Goleta, Raytheon	2,485	2,277	9.1%	2,485	2,277	9.1%
83 UCSB, County Health, Cottage Hospital	1,898	1,899	-0.1%	1,898	1,899	-0.1%
84 La Cumbre, Cottage Hospital, Downtown, SBCC	2,199	2,217	-0.8%	2,199	2,217	-0.8%
85 Clean Air Express	-	3,929	-100.0%	-	3,929	-100.0%
<i>Unknown</i>						
	646	236	173.7%	646	236	173.7%
System Total	1,887,701	2,022,755	-6.7%	1,887,701	2,022,755	-6.7%
<i>Related Routes</i>						
20, 21x Carpinteria	122,124	138,001	-11.5%	122,124	138,001	-11.5%
1, 2, 37 East/West & Crosstown	326,022	355,300	-8.2%	326,022	355,300	-8.2%
4, 5, 15x, 16, 17 Mesa Lines	234,123	240,946	-2.8%	234,123	240,946	-2.8%
6, 11 State/Hollister	421,231	459,803	-8.4%	421,231	459,803	-8.4%
7, 8, 9 Calle Real/Fairview	88,253	99,356	-11.2%	88,253	99,356	-11.2%
82, 83, 84 Valley Express	6,582	6,393	3.0%	6,582	6,393	3.0%

Source: MTD Passdat Program, MTD Transit Development Department, Planning Section

Planning and Marketing

MTD Passengers per Revenue Hour (July - September 2010)

LINE	Quarter			YTD			
	Jul 10 - Sep 10	Jul 09 - Sep 09	%Change	FY 2011	FY 2010	% Change	
1	West Santa Barbara	47.0	50.8	-7.4%	47.0	50.8	-7.4%
2	East Santa Barbara	40.7	44.4	-8.3%	40.7	44.4	-8.3%
3	Oak Park	28.5	29.9	-4.6%	28.5	29.9	-4.6%
4	Mesa / SBCC	35.4	36.1	-2.1%	35.4	36.1	-2.1%
5	Mesa / La Cumbre	29.8	30.3	-1.9%	29.8	30.3	-1.9%
6	Goleta	39.4	45.4	-13.2%	39.4	45.4	-13.2%
7	County Health / Fairview	28.4	26.7	6.6%	28.4	26.7	6.6%
8	County Health	35.1	38.9	-9.6%	35.1	38.9	-9.6%
9	Calle Real / Old Town Shuttle	16.6	22.3	-25.5%	16.6	22.3	-25.5%
10	Cathedral Oaks	20.9	31.5	-33.6%	20.9	31.5	-33.6%
11	UCSB	38.7	41.5	-6.8%	38.7	41.5	-6.8%
12x	Goleta Express	46.6	50.6	-8.0%	46.6	50.6	-8.0%
14	Montecito	22.2	25.5	-13.3%	22.2	25.5	-13.3%
15x	SBCC / UCSB Express	40.5	39.5	2.6%	40.5	39.5	2.6%
16	City College Shuttle	83.0	92.9	-10.6%	83.0	92.9	-10.6%
17	Lower West / SBCC	68.5	74.9	-8.5%	68.5	74.9	-8.5%
20	Carpinteria	26.9	30.1	-10.4%	26.9	30.1	-10.4%
21x	Carpinteria Express	26.7	31.1	-14.2%	26.7	31.1	-14.2%
22	Old Mission	13.0	15.3	-15.1%	13.0	15.3	-15.1%
23	Winchester Canyon	22.0	26.6	-17.1%	22.0	26.6	-17.1%
24x	UCSB Express	49.0	46.3	5.8%	49.0	46.3	5.8%
25	Ellwood	22.9	26.2	-12.6%	22.9	26.2	-12.6%
27	Isla Vista Shuttle	25.4	18.1	40.3%	25.4	18.1	40.3%
36	Seaside Shuttle	20.9	20.8	0.6%	20.9	20.8	0.6%
37	Crosstown Shuttle	20.1	22.7	-11.6%	20.1	22.7	-11.6%
	Booster Services	72.7	90.6	-19.7%	72.7	90.6	-19.7%
	System Subtotal	34.9	38.2	-8.7%	34.9	38.2	-8.7%
<i>Downtown Waterfront Shuttles</i>							
30	Downtown Shuttle	43.7	44.4	-1.6%	43.7	44.4	-1.6%
31	East Beach Waterfront Shuttle	33.7	34.8	-3.2%	33.7	34.8	-3.2%
32	West Beach Waterfront Shuttle	32.1	31.6	1.5%	32.1	31.6	1.5%
<i>Commuter Lot Shuttle</i>							
50	Carillo Commuter Lot Shuttle	10.2	15.9	-36.1%	10.2	15.9	-36.1%
<i>Valley Express</i>							
82	Goleta, Raytheon	18.5	17.0	9.1%	18.5	17.0	9.1%
83	UCSB, County Health, Cottage Hospital	11.2	11.2	-0.1%	11.2	11.2	-0.1%
84	La Cumbre, Cottage Hospital, Downtown, SBCC	14.3	14.4	-0.8%	14.3	14.4	-0.8%
85	Clean Air Express	0.0	24.8	-100.0%	0.0	24.8	-100.0%
<i>Unknown</i>							
		4.0	3.2	21.9%	4.0	3.2	21.9%
	System Total	35.0	38.1	-8.1%	35.0	38.1	-8.1%

<i>Related Routes</i>							
20, 21x	Carpinteria	26.9	30.3	-11.4%	26.9	30.3	-11.4%
1, 2, 37	East/West & Crosstown	37.9	41.4	-8.5%	37.9	41.4	-8.5%
4, 5, 15x, 16, 17	Mesa Lines	42.8	44.7	-4.2%	42.8	44.7	-4.2%
6, 11	State/Hollister	39.0	43.2	-9.7%	39.0	43.2	-9.7%
7, 8, 9	Calle Real	26.6	30.9	-13.8%	26.6	30.9	-13.8%
82, 83, 84	Valley Express	14.4	14.0	2.9%	14.4	14.0	2.9%

Source: MTD Passdat Program, MTD Transit Development Department, Planning Section

Planning and Marketing

MTD 'Too Full to Board' Loads* (July - September 2010)

LINE	Quarter			Year to Date		
	Jul - Sep 2010	Jul - Sep 2009	% Change	FY 2011	FY 2010	% Change
1 West Santa Barbara	10	6	66.7%	10	6	66.7%
2 East Santa Barbara	13	13	0.0%	13	13	0.0%
3 Oak Park	19	2	850.0%	19	2	850.0%
4 Mesa / SBCC	12	8	50.0%	12	8	50.0%
5 Mesa / La Cumbre	39	29	34.5%	39	29	34.5%
6 Goleta	100	88	13.6%	100	88	13.6%
7 County Health / Fairview	6	-	100.0%	6	-	100.0%
8 County Health	-	-	0.0%	-	-	0.0%
9 Calle Real / Old Town Shuttle	1	1	0.0%	1	1	0.0%
10 Cathedral Oaks	3	1	0.0%	3	1	200.0%
11 UCSB	55	59	-6.8%	55	59	-6.8%
12x Goleta Express	1	18	-94.4%	1	18	-94.4%
14 Montecito	3	3	0.0%	3	3	0.0%
15x SBCC / UCSB Express	197	140	40.7%	197	140	40.7%
16 City College Shuttle	33	53	-37.7%	33	53	-37.7%
17 Lower West / SBCC	25	52	-51.9%	25	52	-51.9%
20 Carpinteria	1	11	-90.9%	1	11	-90.9%
21x Carpinteria Express	2	8	-75.0%	2	8	-75.0%
22 Old Mission	-	-	0.0%	-	-	0.0%
23 Winchester Canyon	2	16	-87.5%	2	16	-87.5%
24x UCSB Express	120	51	135.3%	120	51	135.3%
25 Ellwood	-	3	-100.0%	-	3	-100.0%
27 Isla Vista Shuttle	15	3	400.0%	15	3	400.0%
36 Seaside Shuttle	6	4	50.0%	6	4	50.0%
37 Crosstown Shuttle	-	5	-100.0%	-	5	-100.0%
System Subtotal	663	574	15.5%	663	574	15.5%
<i>Downtown Waterfront Shuttles</i>						
30 Downtown Shuttle	807	900	-10.3%	807	900	-10.3%
31 East Beach Waterfront Shuttle	51	46	10.9%	51	46	10.9%
32 West Beach Waterfront Shuttle	7	1	100.0%	7	1	600.0%
<i>Commuter Lot Shuttle</i>						
50 Carillo Commuter Lot Shuttle	-	-	0.0%	-	-	0.0%
<i>Valley Express</i>						
82 Goleta, Raytheon	-	-	0.0%	-	-	0.0%
83 UCSB, County Health, Cottage Hospital	-	-	0.0%	-	-	0.0%
84 La Cumbre, Cottage Hospital, Downtown, SBCC	-	-	0.0%	-	-	0.0%
85 Clean Air Express	-	-	0.0%	-	-	0.0%
<i>Related Routes</i>						
20, 21x Carpinteria	3	19	-84.2%	3	19	-84.2%
1, 2, 37 East/West & Crosstown	23	24	-4.2%	23	24	-4.2%
4, 5, 15x, 16, 17 Mesa Lines	294	274	7.3%	306	282	8.5%
6, 11 State/Hollister	155	147	5.4%	155	147	5.4%
7, 8, 9 Calle Real, Fairview	7	1	600.0%	7	1	600.0%
<i>Unknown/Miscellaneous</i>						
	5	2	150.0%	5	2	150.0%
System Total	1,533	1,523	0.7%	1,533	1,523	0.7%

* Indicates that passengers were refused service because a vehicle was too full to safely board additional riders.

Source: GFI Genfare, MTD Transit Development Department, Planning Section

Planning and Marketing

MTD 'At Capacity' Loads* (July - September 2010)

LINE	Quarter			Year to Date		
	Jul - Sep 2010	Jul - Sep 2009	% Change	FY 2011	FY 2010	% Change
1 West Santa Barbara	6	18	-66.7%	6	18	-66.7%
2 East Santa Barbara	35	53	-34.0%	35	53	-34.0%
3 Oak Park	18	15	20.0%	18	15	20.0%
4 Mesa / SBCC	1	6	-83.3%	1	6	-83.3%
5 Mesa / La Cumbre	58	21	176.2%	58	21	176.2%
6 Goleta	115	91	26.4%	115	91	26.4%
7 County Health / Fairview	19	4	375.0%	19	4	375.0%
8 County Health	2	8	-75.0%	2	8	-75.0%
9 Calle Real / Old Town Shuttle	1	2	-50.0%	1	2	-50.0%
10 Cathedral Oaks	1	3	-66.7%	1	3	-66.7%
11 UCSB	147	82	79.3%	147	82	79.3%
12x Goleta Express	23	30	-23.3%	23	30	-23.3%
14 Montecito	5	6	-16.7%	5	6	-16.7%
15x SBCC / UCSB Express	116	127	-8.7%	116	127	-8.7%
16 City College Shuttle	10	17	-41.2%	10	17	-41.2%
17 Lower West / SBCC	35	27	29.6%	35	27	29.6%
20 Carpinteria	23	12	91.7%	23	12	91.7%
21x Carpinteria Express	10	12	-16.7%	10	12	-16.7%
22 Old Mission	-	-	0.0%	-	-	0.0%
23 Winchester Canyon	5	1	400.0%	5	1	400.0%
24x UCSB Express	133	72	84.7%	133	72	84.7%
25 Ellwood	9	24	-62.5%	9	24	-62.5%
27 Isla Vista Shuttle	13	7	85.7%	13	7	85.7%
36 Seaside Shuttle	7	3	133.3%	7	3	133.3%
37 Crosstown Shuttle	2	5	-60.0%	2	5	-60.0%
System Subtotal	794	646	22.9%	794	646	22.9%
<i>Downtown Waterfront Shuttles</i>						
30 Downtown Shuttle	329	540	-39.1%	329	540	-39.1%
31 East Beach Waterfront Shuttle	6	16	-62.5%	6	16	-62.5%
32 West Beach Waterfront Shuttle	-	-	0.0%	-	-	0.0%
<i>Commuter Lot Shuttle</i>						
50 Carillo Commuter Lot Shuttle	-	-	0.0%	-	-	0.0%
<i>Valley Express</i>						
82 Goleta, Raytheon	-	-	0.0%	-	-	0.0%
83 UCSB, County Health, Cottage Hospital	-	-	0.0%	-	-	0.0%
84 La Cumbre, Cottage Hospital, Downtown, SBCC	-	-	0.0%	-	-	0.0%
85 Clean Air Express	-	-	0.0%	-	-	0.0%
<i>Related Routes</i>						
20, 21x Carpinteria	33	24	37.5%	33	24	37.5%
1, 2, 37 East/West & Crosstown	43	76	-43.4%	43	76	-43.4%
4, 5, 15x, 16, 17 Mesa Lines	220	198	11.1%	220	198	11.1%
6, 11 State/Hollister	262	173	51.4%	262	173	51.4%
7, 8, 9 Calle Real, Fairview	22	14	57.1%	22	14	57.1%
<i>Unknown/Miscellaneous</i>						
	5	-	100.0%	5	-	100.0%
System Total	1,134	1,202	-5.7%	1,134	1,202	-5.7%

* Classified as a 30-foot vehicle with 10 or more standees, or a 40-foot vehicle with 20 or more standees.

Source: GFI Genfare, MTD Transit Development Department, Planning Section

Planning and Marketing

MTD Bicycles Carried (July - September 2010)

LINE	Quarter			Year to Date			
	Jul - Sep 2010	Jul - Sep 2009	% Change	FY 2011	FY 2010	% Change	
1	West Santa Barbara	597	755	-20.9%	597	755	-20.9%
2	East Santa Barbara	1,595	1,770	-9.9%	1,595	1,770	-9.9%
3	Oak Park	883	890	-0.8%	883	890	-0.8%
4	Mesa / SBCC	621	663	-6.3%	621	663	-6.3%
5	Mesa / La Cumbre	1,119	1,100	1.7%	1,119	1,100	1.7%
6	Goleta	4,526	4,969	-8.9%	4,526	4,969	-8.9%
7	County Health / Fairview	1,042	305	241.6%	1,042	305	241.6%
8	County Health	753	1,209	-37.7%	753	1,209	-37.7%
9	Calle Real / Old Town Shuttle	148	135	9.6%	148	135	9.6%
10	Cathedral Oaks	151	147	2.7%	151	147	2.7%
11	UCSB	5,521	5,691	-3.0%	5,521	5,691	-3.0%
12x	Goleta Express	2,119	2,035	4.1%	2,119	2,035	4.1%
14	Montecito	682	705	-3.3%	682	705	-3.3%
15x	SBCC / UCSB Express	698	887	-21.3%	698	887	-21.3%
16	City College Shuttle	154	152	1.3%	154	152	1.3%
17	Lower West / SBCC	596	509	17.1%	596	509	17.1%
20	Carpinteria	2,226	2,369	-6.0%	2,226	2,369	-6.0%
21x	Carpinteria Express	996	1,210	-17.7%	996	1,210	-17.7%
22	Old Mission	279	185	50.8%	279	185	50.8%
23	Winchester Canyon	629	628	0.2%	629	628	0.2%
24x	UCSB Express	3,203	3,240	-1.1%	3,203	3,240	-1.1%
25	Ellwood	390	380	2.6%	390	380	2.6%
27	Isla Vista Shuttle	311	187	66.3%	311	187	66.3%
36	Seaside Shuttle	-	-	0.0%	-	-	0.0%
37	Crosstown Shuttle	-	-	0.0%	-	-	0.0%
<i>System Subtotal</i>		29,239	30,121	-2.9%	29,239	30,121	-2.9%
<i>Downtown Waterfront Shuttles (1)</i>							
30	State Street Shuttle	-	-	0.0%	-	-	0.0%
31	East Beach Waterfront Shuttle	-	-	0.0%	-	-	0.0%
32	West Beach Waterfront Shuttle	-	-	0.0%	-	-	0.0%
<i>Commuter Lot Shuttle (1)</i>							
50	Carillo Commuter Lot Shuttle	-	-	0.0%	-	-	0.0%
<i>Valley Express</i>							
82	Goleta, Raytheon	64	12	433.3%	64	12	433.3%
83	UCSB, County Health, Cottage Hospital	54	70	-22.9%	54	70	-22.9%
84	La Cumbre, Cottage Hospital, Downtown, SBC	64	8	700.0%	64	8	700.0%
85	Clean Air Express	-	70	-100.0%	-	70	-100.0%
<i>Related Routes</i>							
20, 21x Carpinteria		3,222	3,579	-10.0%	3,222	3,579	-10.0%
1,2,37 East/West & Crosstown		2,192	2,525	-13.2%	2,192	2,525	-13.2%
4, 5, 15x, 16, 17 Mesa Lines		3,188	3,311	-3.7%	3,188	3,311	-3.7%
6,11 State/Hollister		10,047	10,660	-5.8%	10,047	10,660	-5.8%
7, 8, 9 Calle Real/Fairview		1,943	1,649	17.8%	1,943	1,649	17.8%
81, 82, 83, 84 Valley Express		182	90	102.2%	182	90	102.2%
<i>Unknown/Miscellaneous</i>							
		11	37	-70.3%	11	37	-70.3%
System Total		29,432	30,318	-2.9%	29,432	30,318	-2.9%

(1) MTD electric shuttles cannot carry bicycles.

Source: GFI Genfare, MTD Transit Development Department, Planning Section

Planning and Marketing

MTD Wheelchairs Boarded (July - September 2010)

LINE	Quarter			Year to Date			
	Jul - Sep 2010	Jul - Sep 2009	% Change	FY 2011	FY 2010	% Change	
1	West Santa Barbara	426	480	-11.3%	426	480	-11.3%
2	East Santa Barbara	664	650	2.2%	664	650	2.2%
3	Oak Park	364	394	-7.6%	364	394	-7.6%
4	Mesa / SBCC	72	72	0.0%	72	72	0.0%
5	Mesa / La Cumbre	246	230	7.0%	246	230	7.0%
6	Goleta	931	758	22.8%	931	758	22.8%
7	County Health / Fairview	182	113	61.1%	182	113	61.1%
8	County Health	173	211	-18.0%	173	211	-18.0%
9	Calle Real / Old Town Shuttle	180	403	-55.3%	180	403	-55.3%
10	Cathedral Oaks	5	2	150.0%	5	2	150.0%
11	UCSB	908	640	41.9%	908	640	41.9%
12x	Goleta Express	299	268	11.6%	299	268	11.6%
14	Montecito	134	80	67.5%	134	80	67.5%
15x	SBCC / UCSB Express	20	10	100.0%	20	10	100.0%
16	City College Shuttle	81	44	84.1%	81	44	84.1%
17	Lower West / SBCC	82	103	-20.4%	82	103	-20.4%
20	Carpinteria	441	272	62.1%	441	272	62.1%
21x	Carpinteria Express	121	138	-12.3%	121	138	-12.3%
22	Old Mission	6	3	100.0%	6	3	100.0%
23	Winchester Canyon	50	59	-15.3%	50	59	-15.3%
24x	UCSB Express	99	102	-2.9%	99	102	-2.9%
25	Ellwood	38	24	58.3%	38	24	58.3%
27	Isla Vista Shuttle	8	3	166.7%	8	3	166.7%
36	Seaside Shuttle	25	7	257.1%	25	7	257.1%
37	Crosstown Shuttle	42	76	-44.7%	42	76	-44.7%
<i>System Subtotal</i>		5,597	5,142	8.8%	5,597	5,142	8.8%
<i>Downtown Waterfront Shuttles</i>							
30	State Street Shuttle	150	236	-36.4%	150	236	-36.4%
31	East Beach Waterfront Shuttle	110	101	8.9%	110	101	8.9%
32	West Beach Waterfront Shuttle	13	19	-31.6%	13	19	-31.6%
<i>Commuter Lot Shuttle</i>							
50	Carillo Commuter Lot Shuttle	-	3	100.0%	-	3	100.0%
<i>Valley Express</i>							
82	Goleta, Raytheon	61	1	6000.0%	61	1	6000.0%
83	UCSB, County Health, Cottage Hospital	1	-	100.0%	1	-	100.0%
84	La Cumbre, Cottage Hospital, Downtown, SBC	1	-	100.0%	1	-	100.0%
85	Clean Air Express	-	-	0.0%	-	-	0.0%
<i>Related Routes</i>							
20, 21x Carpinteria		562	410	37.1%	562	410	37.1%
1, 2, 37 East/West & Crosstown		1,132	1,206	-6.1%	1,132	1,206	-6.1%
4, 5, 15x, 16, 17 Mesa Lines		501	459	9.2%	501	459	9.2%
6, 11 State/Hollister		1,839	1,398	31.5%	1,839	1,398	31.5%
7, 8, 9 Calle Real/Fairview		535	727	-26.4%	535	727	-26.4%
81, 82, 83, 84 Valley Express		63	1	6200.0%	63	1	6200.0%
<i>Unknown/Miscellaneous</i>							
		4	2	100.0%	4	2	100.0%
System Total		5,937	5,504	7.9%	5,937	5,504	7.9%

Source: GFI Genfare, MTD Transit Development Department, Planning Section

Ad Revenue Comparison, FY 2010 to FY 2011

2010	Total Sold	Unit Price	Total Revenue
<i>Sold individually</i>			
Nova King	396	\$150	\$59,400
Nova Queen	0	\$100	\$0
Nova Tail	310	\$150	\$46,500
40' King	276	\$260	\$71,760
40' Queen	192	\$135	\$25,920
40' Tail	226	\$150	\$33,900
Hybrid King	96	\$210	\$20,160
Hybrid Queen	40	\$150	\$6,000
Hybrid Tail	96	\$210	\$20,160
30' Gillig King	143	\$175	\$25,025
30' Gillig Queen	24	\$65	\$1,560
30' Gillig Tail	143	\$150	\$21,450
<i>Sold by fleet</i>			
Valley Express King	0	\$52	\$0
Valley Express Queen	0	\$48	\$0
Valley Express Tail	10	\$104	\$1,040
IV Shuttle King	36	\$77	\$2,772
IV Shuttle Queen	0	\$35	\$0
IV Shuttle Tail	0	\$77	\$0
Crosstown Shuttle Tail	40	\$200	\$8,000
D/W Shuttle Tail	132	\$200	\$26,400
Seaside Shuttle Tail	24	\$200	\$4,800
Wharf Woody Shuttle Tail	5	\$140	\$700

2189

Total Estimated Ad Revenue:	\$375,547
2010 Budget:	\$370,000
Variance:	\$5,547
Total Inventory:	3216
Total Inventory Sold:	2189
Percentage Sold:	68%

2011	Total Sold	Unit Price	Total Revenue
<i>Sold individually</i>			
Nova King	396	\$150	\$59,400
Nova Queen	223	\$140	\$31,220
Nova Tail	359	\$200	\$71,800
40' King	276	\$171	\$47,196
40' Queen	212	\$144	\$30,528
40' Tail	237	\$200	\$47,400
Hybrid King	96	\$180	\$17,280
Hybrid Queen	78	\$150	\$11,700
Hybrid Tail	96	\$210	\$20,160
30' Gillig King	143	\$200	\$28,600
30' Gillig Queen	71	\$144	\$10,224
30' Gillig Tail	149	\$200	\$29,800
<i>Sold by fleet</i>			
Valley Express King	7	\$360	\$2,520
Valley Express Queen	0	\$280	\$0
Valley Express Tail	10	\$613	\$6,130
IV Shuttle King	36	\$173	\$6,228
IV Shuttle Queen	18	\$144	\$2,592
IV Shuttle Tail	18	\$200	\$3,600
Crosstown Shuttle Tail	8	\$800	\$6,400
D/W Shuttle Tail	12	\$1,700	\$20,400
Seaside Shuttle Tail	6	\$400	\$2,400
Wharf Woody Shuttle Tail	0	\$0	\$0

2451

Total Estimated Ad Revenue:	\$455,578
2010 Budget:	\$370,000
Variance:	\$85,578
Total Inventory:	3216
Total Inventory Sold:	2451
Percentage Sold:	76%

Transit Operations

AM/PM Startup for July-August-September

Starts (from terminal)	2010				2009			
	Total Trips	Missed/ Late Starts (missing driver)	Missed/ Late Starts (operations error)	Late Starts (bus failure)	Total	Missed/ Late Starts (missing driver)	Missed/ Late Starts (operations error)	Late Starts (bus failure)
Weekday AM	4,718	1(1)	0	3(2)	5,002	1(1)	0	1 (2)
Weekday PM	2,289	2(1)	0	2(2)	2,244	0	0	0
Saturday	588	2(1)	0	1(2)	511	1(1)	0	0
Sunday	506	0	0	0	452	0	0	0
Quarter Totals	8,101	5	0	6	8,209	2	0	1

AM/PM Startup YTD

Starts (from terminal)	FY 2011				FY 2010			
	Total	Missed/ Late Starts (missing driver)	Missed/ Late Starts (operations error)	Late Starts (bus failure)	Total	Missed/ Late Starts (missing driver)	Missed/ Late Starts (operations error)	Late Starts (bus failure)
Weekday AM	4,718	1(1)	0	3(2)	5,002	1(1)	0	1 (2)
Weekday PM	2,289	2(1)	0	2(2)	2,244	0	0	0
Saturday	588	2(1)	0	1(2)	511	1(1)	0	0
Sunday	506	0	0	0	452	0	0	0
YTD Totals	8,101	5	0	6	8,209	2	0	1

(1) Driver minimally late

(2) Minor maintenance problems requiring repair prior to leaving for start of service.

(3) Incidents/accidents

Transit Operations

Complaints (July, August, September 2010)

Month	Passenger Relations	Driving Observations	Schedule/ Policy	Missed Passengers	Complaints	Total Monthly per Passenger Boarding July, Aug., Sept. 2010	Total Monthly per Passenger Boarding July, Aug., Sept. 2009	Compliments
July	2	4	4	1	11	1/54,228	1/16,986	4
August	0	6	8	3	17	1/36,609	1/11,391	2
Sept.	3	2	17	2	24	1/27,867	1/17,193	2
Quarter Total	5	12	29	6	52	1/36,301	1/14,764	8

	Complaints	Compliments
Current FY 11-12 YTD	52	8
Prior FY 09-10 YTD	137	35

Transit Operations



Fleet Facts

EV Fleet	Number in Fleet	Battery Type	Traction
EV's 1 -11	9	Lead Acid	DC Drive
EV's 12-17, 19-21	10	Ni-Cad	AC Drive
EV 18	1	LiFePO4	AC Drive
EV 22	1	Lead Acid	AC Drive

Fleet Consumption Statistics

Fiscal Year to Date (September 30, 2010)

Miles	KWH	MPK	Parts	Labor	Cost per Mile
59,905	90,997	0.66	\$61,393	\$17,347	\$1.60

Prior Fiscal Year to Date (September 30, 2009)

Miles	KWH	MPK	Parts	Labor	Cost per Mile
59,635	91,276	0.65	\$27,722	\$15,013	\$1.00

Transit Operations



Fleet Facts

Diesel Fleet	Number in Fleet	Engine	Transmission
1992 Flxible Metro	8	Cummins ISM Inline 6	Voith D863W7.2

Fleet Consumption Statistics

Fiscal Year to Date (September 30, 2010)

Miles	MPG	Fuel/Oil	Parts	Labor	Cost per Mile
12,126	3.70	\$8,597	\$3,570	\$4,618	\$1.38

Prior Fiscal Year to Date (September 30, 2009)

Miles	MPG	Fuel/Oil	Parts	Labor	Cost per Mile
13,794	4.11	\$6,527	\$2,898	\$4,646	\$1.02

Transit Operations



Fleet Facts

Diesel Fleet	Number in Fleet	Engine	Transmission
1998 Nova LFS	28	Detroit Diesel Series 40 inline 6	Allison B400R
2000 Nova LFS	5	Detroit Diesel Series 40 inline 6	Allison B400R

Fleet Consumption Statistics

Fiscal Year to Date (September 30, 2010)

Miles	MPG	Fuel/Oil	Parts	Labor	Cost per Mile
294,759	4.27	\$183,005	\$54,815	\$43,578	\$0.95

Prior Fiscal Year to Date (September 30, 2009)

Miles	MPG	Fuel/Oil	Parts	Labor	Cost per Mile
323,189	4.46	\$138,134	\$82,291	\$46,078	\$0.82

Transit Operations



Fleet Facts

Diesel Fleet	Number in Fleet	Engine	Transmission
2009 Gillig Hybrid LF 29	3	Cummins ISB Inline 6	Allison EP40

Fleet Consumption Statistics Fiscal Year to Date (September 30, 2010)

Miles	MPG	Fuel/Oil	Parts	Labor	Cost per Mile
17,168	6.03	\$7,526	\$2,861	\$2,037	\$0.72

Prior Fiscal Year to Date (September 30, 2009)

Miles	MPG	Fuel/Oil	Parts	Labor	Cost per Mile
9,701	5.76	\$3,048	\$393	\$1,037	\$0.46

Partial 1st Quarter only, buses placed in service August 24, 2009

Transit Operations



Fleet Facts

Diesel Fleet	Number in Fleet	Engine Type	Transmission
2004 Gillig LF 29	14	Cummins ISB inline 6	Allison B300R

Fleet Consumption Statistics

Fiscal Year to Date (September 30, 2010)

Miles	MPG	Fuel/Oil	Parts	Labor	Cost per Mile
103,635	4.87	\$56,592	\$25,783	\$15,653	\$0.95

Prior Fiscal Year to Date (September 30, 2009)

Miles	MPG	Fuel/Oil	Parts	Labor	Cost per Mile
97,358	4.81	\$38,846	\$16,634	\$20,376	\$0.78

Transit Operations



Fleet Facts

Diesel Fleet	Number in Fleet	Engine	Transmission
2007 Gillig Hybrid LF 40	8	Cummins ISB Inline 6	Allison EP40

Fleet Consumption Statistics Fiscal Year to Date (September 30, 2010)

Miles	MPG	Fuel/Oil	Parts	Labor	Cost per Mile
111,379	5.37	\$56,505	\$11,466	\$11,322	\$0.71

Prior Fiscal Year to Date (September 30, 2009)

Miles	MPG	Fuel/Oil	Parts	Labor	Cost per Mile
65,392	4.67	\$26,584	\$5,292	\$6,176	\$0.58

Transit Operations



Fleet Facts

Diesel Fleet	Number in Fleet	Engine Type	Transmission
2004 Gillig LF 40	15	Detroit Diesel Series 50 inline 4	Allison B400R

Fleet Consumption Statistics

Fiscal Year to Date (September 30, 2010)

Miles	MPG	Fuel/Oil	Parts	Labor	Cost per Mile
138,514	4.05	\$94,364	\$32,171	\$18,557	\$1.05

Prior Fiscal Year to Date (September 30, 2009)

Miles	MPG	Fuel/Oil	Parts	Labor	Cost per Mile
156,811	4.05	\$76,598	\$33,904	\$22,681	\$0.85

Transit Operations



Fleet Facts

Diesel Fleet	Number in Fleet	Engine	Transmission
2004 MCI D4000	3	Detroit Diesel Series 60 inline 6	Allison B500
2004 MCI D4500	2	Detroit Diesel Series 60 inline 6	Allison B500

Fleet Consumption Statistics

Fiscal Year to Date (September 30, 2010)

Miles	MPG	Fuel/Oil	Parts	Labor	Cost per Mile
19,927	4.73	\$11,477	\$1,394	\$3,131	\$0.80

Prior Fiscal Year to Date (September 30, 2009)

Miles	MPG	Fuel/Oil	Parts	Labor	Cost per Mile
27,407	4.96	\$10,289	\$3,158	\$2,375	\$0.58

Average Miles between Road Calls

Fiscal Year to Date (September 30, 2010)

Bus Series	All Road Calls	Mechanical Road Calls	Accumulated Miles	Average Miles between Mechanical Road Calls
400 Nova 40 ft	70	44	294,759	6,699
500 Flxible 40 ft	0 Min Use No School	0 Min. Use No School	12,126	12,126
600 Gillig 40 ft	25	18	138,514	7,695
700 Gillig 29 ft	39	35	103,635	2,961
700 Gillig 29 ft Hybrid	3	3	17,168	5,723
800 MCI 45 & 40 ft	0	0	19,927	19,927
900 Gillig 40 ft Hybrid	19	15	111,379	7,425
EV's	77	24	59,905	2,496
Fleet FY 9/10	223	139	757,413	5,449
FY 10/11	137	108	753,287	6,975

* Partial 1st Quarter only, buses placed in service August 24, 2009

Management & Administration

July through September 2010

MTD Turnover Rate 2006-2009	2007	2008	2009	2010
Staff	5%	0%	0%	0%
Drivers	1%	1%	1%	0%
Service Workers	0%	0%	0%	0%
Mechanics	0%	0%	0%	0%
Overall % Totals	1%	1%	1%	0%

Management & Administration

July through September 2010

Workers' Compensation Claims

Workers' Compensation Claims (employee injury)	Temporary Disability (lost time)	No Lost time (first aid only)
July - Sept 2007	1	3
July - Sept 2008	3	1
July - Sept 2009	4	4
July - Sept 2010	0	4

Liability Claims

Liability Claims (bus accidents)	Reportable to National Transit Data Base	Reportable to MTD
July - Sept 2007	0	5
July - Sept 2008	1	8
July - Sept 2009	0	7
July - Sept 2010	1	8

Transit Finance

Compliance Report for Quarter Ending September 30, 2010

As a recipient of Federal funds from the Federal Transit Administration (FTA), the Santa Barbara Metropolitan Transit District (MTD) is subject to a number of rules and regulations. This report describes actions taken between July 1 and September 30, 2010, to address these requirements.

MTD Compliance Actions

Submitted MTD's triennial Equal Employment Opportunity update to FTA, as required.

Participated in FTA "Webinars" regarding ARRA reporting requirements.

Submitted monthly, quarterly, and annual reports as required for MTD's American Recovery and Reinvestment Act of 2009 (ARRA) grant.

Submitted Milestone Progress Reports and Federal Financial Reports for MTD's active FTA grants.

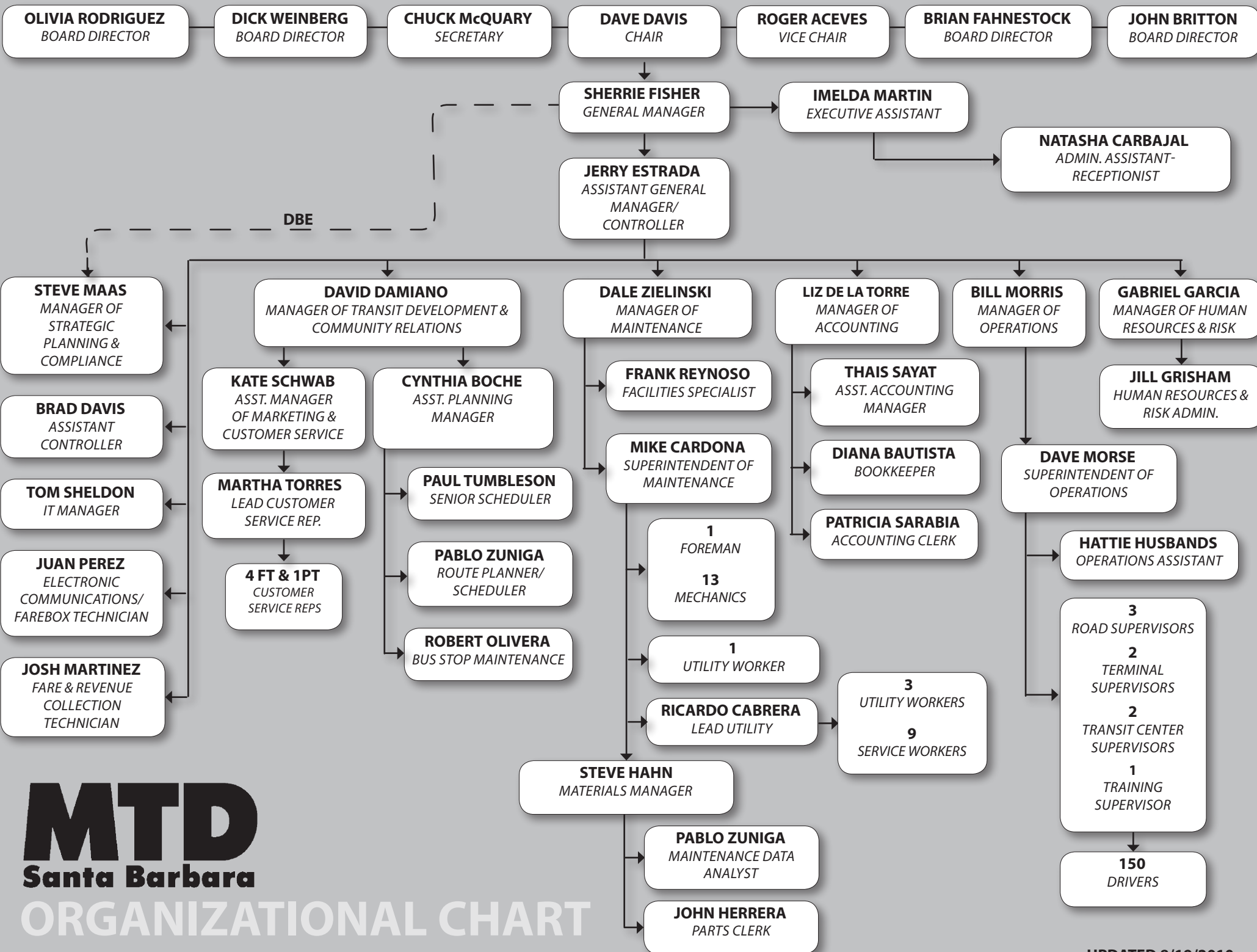
Submitted MTD and Easy Lift monthly National Transit Database Safety and Security reports to FTA.

Submitted MTD and Easy Lift monthly National Transit Database Ridership reports to FTA.

Submitted Disadvantaged Business Enterprise (DBE) Semi-Annual "Uniform Report of DBE Commitments/Awards and Payments" to FTA as required.

Continued to monitor all FTA compliance areas.

Continued to monitor the Americans with Disabilities Act (ADA) complementary paratransit service operated by Easy Lift Transportation for MTD (*MTD is responsible for this service, and must ensure that it complies with all FTA requirements*).



ORGANIZATIONAL CHART

BOARD OF DIRECTORS REPORT

MEETING DATE: NOVEMBER 2, 2010 **AGENDA ITEM #: 8**

TYPE: ACTION

PREPARED BY: JERRY ESTRADA

Signature

REVIEWED BY: GENERAL MANAGER

GM Signature

SUBJECT: 2010 US DECENNIAL CENSUS UPDATE

RECOMMENDATION:

Staff recommends that the Board authorize the General Manager and Legislative Committee to advocate for positions consistent with the best interest of MTD related to the impacts of the 2010 Decennial Census.

DISCUSSION:

Consistent with guidance received from the Board during the prior meeting, staff met with the Legislative Committee and discussed the potential impacts of the 2010 Decennial Census. The discussion focused primarily on the two topics outlined previously to the Board:

- The specific boundaries of the SB UZA and potential merger of the SB UZA into an “agglomeration” of existing UZA’s (Los Angeles-Riverside-San Bernardino-Ventura County)
- Impact of SB UZA population exceeding 200,000

Staff is in the process of preparing its comments to the Department of Commerce – Bureau of the Census regarding the boundaries of the SB UZA for the Legislative Committee’s consideration. Staff has participated in a conference call with other California transit operators, as well as representatives of the Bureau of the Census coordinated by the California Transit Association. The event was beneficial and staff will use the information provided to prepare comments.

Staff is sharing information with the Santa Barbara County Association of Governments and the Ventura County Transportation Commission regarding this issue. All parties are working cooperatively to maximize the impact of the comments.

Staff is also attempting to acquire information from the Federal Transit Administration regarding the impact on the annual SB UZA appropriation if the population exceeds 200,000.

BOARD OF DIRECTORS REPORT

AGENDA DATE: NOVEMBER 2, 2010 **AGENDA ITEM #:** 9

TYPE: ACTION

PREPARED BY: JERRY ESTRADA

Signature

REVIEWED BY: GENERAL MANAGER

GM Signature

SUBJECT: PROPOSITION 1B – TRANSIT SECURITY GRANT FOR FISCAL YEAR 09-10

DISCUSSION:

Santa Barbara Metropolitan Transit District (MTD) has been allocated \$259,806 in Proposition 1B – Transit Security Grant Program funding for Fiscal Year 09-10. These funds are available for eligible capital projects that provide increased protection from a security or safety threat.

Staff previously submitted an Investment Justification to the appropriate agencies recommending the use of these funds to supplement the acquisition of an Automated Vehicle Location System. (Radio system)

MTD was awarded over \$800,000 in Proposition 1B – PTMISEA funds for the project previously. Staff is confident that with the combined grants totaling in excess of \$1 million the project can be completed. The project will result in purchase of new radio and communications equipment for MTD's fleet of buses. Global positioning equipment included with the radio system will provide the foundation for MTD to improve assess to arrival times of the fleet of buses in service. Future funding could then be used to expand the benefits of the system to provide real-time passenger information related to time of arrival.

RECOMMENDATION:

Staff recommends that the Board authorize the submittal of the necessary documents to finalize application for Fiscal Year 09-10 Proposition 1B – Transit Security funds for the proposed project and pass the Resolution provided by the State for Proposition 1B – Transit Security funds.

APPENDIX E – Governing Body Resolution

**FY 2009-10 Transit System Safety, Security and
Disaster Response Account Program**

BE IT RESOLVED BY THE _____
(Governing Body)

OF THE _____ *THAT*
(Name of Applicant)

_____, *OR*
(Name or Title of Authorized Agent)

_____, *OR*
(Name or Title of Authorized Agent)

_____,
(Name or Title of Authorized Agent)

is hereby authorized to execute for and on behalf of the named applicant, a public entity established under the laws of the State of California, any actions necessary for the purpose of obtaining financial assistance provided by the California Emergency Management Agency.

Passed and approved this _____ day of _____, 20_____

Certification

I, _____, duly appointed and
(Name)

_____ of the _____
(Title) (Governing Body)

do hereby certify that the above is a true and correct copy of a resolution passed and approved by

the _____ of the _____ on the
(Governing body) (Name of Applicant)

_____ day of, _____, 20_____ .

(Official Position)

(Signature)

(Date)

To: Chair Davis
Members of the Board of Directors
From: Sherrie Fisher, General Manager
Date: 10/29/10
Subject: Administrative Update

MTD Staff has begun doing a market assessment to determine the potential growth in commuter service from Ventura and Oxnard. Additionally, this research will allow staff to make recommendations on routes and schedule. MTD Staff recently met with both VCTC Staff and SBCAG staff to go over a variety of issues including the new Ventura/Oxnard service.

VCTC has agreed to provide data pertaining to the Coastal Express that should prove to be useful to MTD when designing the new service. A special thank you goes out to Vic Khami and Myra Montejano of VCTC for setting aside an entire morning to work with both Bill Morris and David Damiano.

Ad sales continue to be strong and contracts for 2011 are now being negotiated with new and existing clients.

MTD currently has 722 followers on Twitter and 132 fans on Facebook.

Because of the Lemon Festival at Girsh Park, MTD buses experienced a few detours; nonetheless it was an incident free event.

The Operations department attended a Halloween Public Safety Community meeting at the City of Goleta Council Chambers. Law enforcement and health agencies presented preemptive plans pertaining to the Halloween weekend in the Goleta and Isla Vista areas. Staff also attended a meeting held at the Isla Vista Foot Patrol; at the meeting final updates were exchanged between the County and UCSB in an attempt to manage the Isla Vista area throughout the weekend.

The bidding process has begun for the following:

- December bid/2011 vacation bid
- Christmas Eve (Sunday Service)
- New Years Eve (Saturday service)
- New Year's Day (Sunday Service)

As required by the Federal Transit Administration (FTA), staff submitted the September monthly Safety & Security Reports and Ridership Reports for MTD and Easy Lift to the National Transit Database.

Staff submitted MTD's required FY 2010 National Transit Database (NTD) Annual Report for MTD and Easy Lift to FTA prior to the October 31st deadline. The NTD is the source for data regarding all public transit providers in the country.

Staff continues to work with SBCAG and VCTC regarding the potential provision by MTD of Measure A-funded peak-period commuter bus service from Ventura County into the District. Staff also continues to work with SBCAG staff regarding the provision by MTD of Measure A-funded "last mile" connector service for the potential Amtrak Surfliner peak-period train service.

MTD served as a host agency for the Fall CalACT (California Association for Coordinated Transportation) conference that was held in Santa Barbara. CalACT membership is primarily small, rural, and specialized California transit providers. Several staff members received complimentary registration for the conference and attended various informative panel discussions.

Staff attended a meeting of SBCAG's Technical Transportation Advisory Committee (TTAC) on Thursday, October 7th. MTD is a voting member of TTAC. The meeting included requests that TTAC recommend that the SBCAG Board approve the Triennial TDA Performance Audits and the Measure A Strategic Plan. TTAC also received summaries of the California Air Resources Board's decision on greenhouse gas emission targets under SB-375, and of the Census Bureau's proposed changes to census geography including urbanized area boundaries.

The engine in Bus #425 is being diagnosed for possible leakage of combustion pressure into the cooling system thereby expelling coolant.

Bus #902 is the next bus to be sent to Valley Power Systems for exchange of the Allison Electric Drive Unit (EDU) in the Field Action Program.

Work continues on build-up of the second set of LiFEPO4 batteries.

A retrofit of engine cooling fan control components on the 700's is in progress as a solution to repeated road calls for invalid warnings of high coolant temperature. To date five of the designated thirteen buses have been retrofitted.

Valley Power Systems will be here Thursday to get information to quote on installation of the Donaldson low NOx DPF's for the MCI's. Exhaust temperature data loggers will need to be installed prior to receiving a quote. Data loggers have been running on Gillig's 711-713 the past week. The exhaust temperature data is needed to assure the DPF's will passively regenerate.

G152+ tires for the Novas have been ordered from Goodyear.

The procurement process is in progress for installation of a chain-link fence surrounding the battery testing area under the canopy nearest the shop. Bids are due October 27th.